

Masport®

DOMESTIC ROTARY MOWERS

MULCHER

SERIES

Part Number 983905 Mulcher 600Quantum XTE 45

From Serial Number 1297175

Month & Date of Manufacture: November 2001

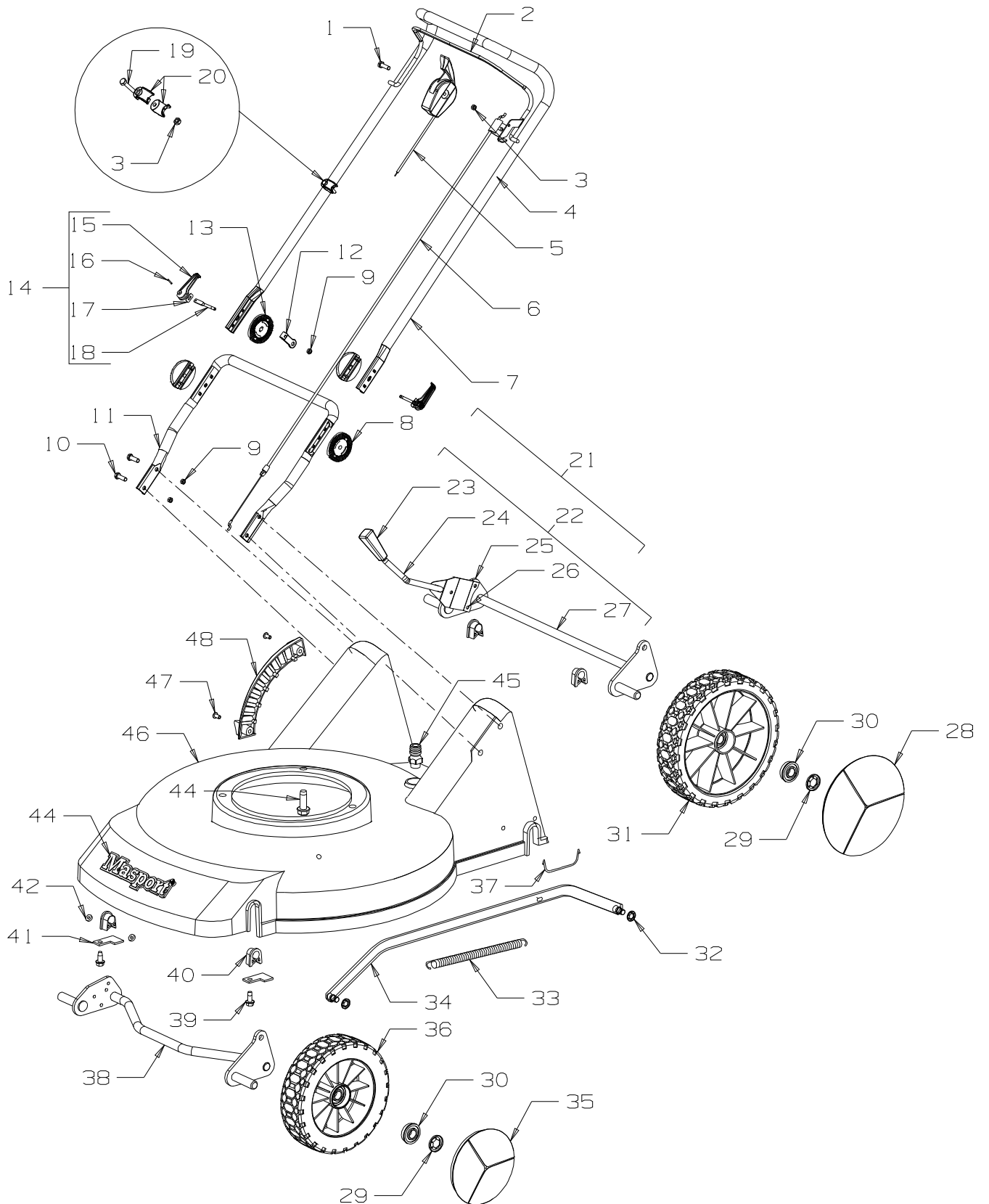




Mulcher 600
Powered By: Briggs & Stratton Quantum XTE 50

Masport®

MULCHER SERIES



When ordering PLEASE QUOTE PART NUMBER & Description, NOT Illustration No.
Determine right or left hand side from standing in operating position (standing at handle)



Mulcher 600
Powered By: Briggs & Stratton Quantum XTE 50

Masport®

MULCHER SERIES

Item No	Part No	Description	Qty	Item No	Part No	Description	Qty
1	503604	Screw, Pan M6 x 45	1	28	580794	Hub Cap, 200mm Dia - Black	2
2	981740	Handle-Bail	1	29	503236	Clip-Starlock, 1/2"	4
3	501764	Nut, M6 Nyloc	2	30	551212	Bearing-Wheel	8
4	503460	Plug-Plastic, 6.3mm Dia	1	31	580791	Wheel Assy-200mm Mk 6	2
5	581340	Control-Throttle, -Ve N/Ch	1		551212	• Bearing-Wheel (2 Per Wheel)	
6	581658	Cable-Engine	1	37	580225	Retainer-Axle, Rear	2
7	981664	Handle-Upper, Upturned (Adjustable)	1	32	501365	Clip-Starlock, 5/16"	2
				34	981157	Rod Assy-Connecting	1
8	581660	Disc-Locking, Outer	2	35	580793	Hub Cap, 150mm Dia - Black	2
9	501793	Nut, M8 Hex Nyloc	6	36	580790	Wheel Assy-175mm Mk 6	2
10	501597	Screw, Set M8 x 20	4		551212	• Bearing-Wheel (2 Per Wheel)	
11	981712	Handle-Lower, "U" (Adjustable)		33	581463	Spring-Counter Balance	1
12	581512	Retainer-Control Cable, Handle	1	38	980019	Axle-Front Assy, 150mm	1
13	581659	Disc-Locking, Inner	2	39	501599	Screw, S/T 1/4" x 5/8"	2
14	980456	Cam Lock Assy	2	40	580030	Bush-Pivot	4
15	580313	• Lever-Handle Locking	2	41	980564	Plate-Retainer, Front Axle	2
16	503369	• Pin, Tension 3/16" x 7/8"	2	42	503150	Clip-Starlock 5 Dia	2
17	016777	• Washer-Slipper	2	43	581240	Nameplate	1
18	580690	• Stud-Handle Lock	2	44	580453	Screw, S/T 3/8" x 1 1/8"	3
19	503794	Screw, Set M6 x 40 - Comfort Start	1	45	783047	Housing - Silver	1
20	582546	Guide-Rope - Comfort Start	2	46	503783	Cyclowash-Fitting	1
21	980229	Lever Assy-Height	1	47	503660	Rivet-Pop 4.7 Dia x 9.0	2
23	580056	• Grip-7.9 Dia, Black	1	48	580025	Quadrant-Height Selector	1
24	980733	• Rod-Height Selector	1			NOT ILLUSTRATED	
25	580649	• Spring-Leaf	1				
26	503373	• Rivet-3/16" x 27/64"	3		503054	Tie-Nylon Cable	4
22	980024	Axle Assy-Rear, Complete	1		583064	Decal-Housing, Rear	1
23	580056	• Grip-7.9 Dia, Black	1		582271	Decal-Front	1
24	980733	• Rod-Height Selector	1		581780	Owners Manual	1
25	580649	• Spring-Leaf	1		580778	Stop-Rope - Comfort Start	1
26	503373	• Rivet-3/16" x 27/64"	3				
27	980020	• Axle-Rear	1				

Bold Text = Assemblies
Bulleted Text = Items included in Assemblies

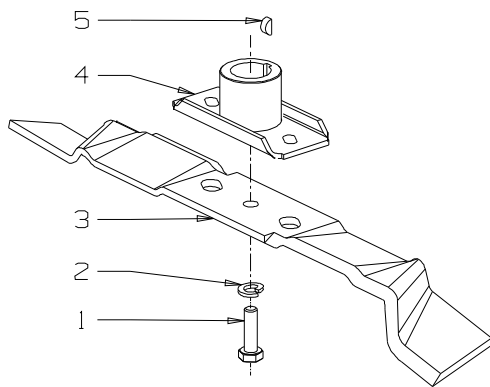


Mulcher 600
Powered By: Briggs & Stratton Quantum XTE 50

Masport®

MULCHER SERIES

Mulching Bar Blade Assembly



Item	Part No	Description	Qty
1	581610	Screw, Set NF 3/8" x 1.25	1
2	500204	Washer, Spring 3/8"	1
3	981158	Blade-Mulching - 460mm	1
4	031640	Driver, Blade - 25mm Shaft	1
5	503363	Key, Woodruff - 5/8" x 3/16" x 1/4"	1

HEAD OFFICE - NEW ZEALAND

1 - 37 Mt Wellington Hwy
Panmure, Auckland 6
Phone: (64 9) 571 1200
Fax: (64 9) 571 5864

HEAD OFFICE - AUSTRALIA

P.O. Box 533 Mordialloc
Braeside 3195
Phone: 1300 366 225
Fax: 1800 035 594