

# LawnBoss

## Ersatzteilliste Spare Parts List

Freischneider **340 Pure**  
Brush Cutter **340 Pure**

N°	Art.N°	Beschreibung	Description	Type	Qty
1	225.903.401.001	Winkelgetriebe kpl.	Gear case ass'y		1
2	225.903.401.002	Sprengring	stop ring	26	1
3	225.903.401.003	Sprengring	stop ring	10	1
4	225.903.401.004	Kugellager	bearing	6000 2RS	2
5	225.903.401.005	Ritzel	pinion		1
6	225.903.401.006	Schraube	screw	M5x25	2
7	225.903.401.007	Scheibe	washer		2
8	225.903.401.008	Bolzen	bolt	M6x12	2
9	225.903.401.009	Getriebe Gehäuse	gear case		1
10	225.903.401.010	Schutz	safety guard		1
11	225.903.401.011	Schraube	screw	M5x12	3
12	225.903.401.012	Kugellager	bearing	6000 / P5	1
13	225.903.401.013	Zahnrad	gear		1
14	225.903.401.014	Getriebewelle	gear shaft		1
15	225.903.401.015	Kugellager	bearing	6202-2RS	1
16	225.903.401.016	Sprengring	stop ring	32	1
17	225.903.401.017	Halter A	holder A		1
18	225.903.401.018	Halter B	holder B		1
19	225.903.401.019	Scheibe	washer	10	1
20	225.903.401.020	Mutter linksgewinde	left nut	M10x1,25	1
21	225.903.401.021	Stift	pin	2x16	2
22	225.903.401.022	Messer	blade		1
23	225.903.401.023	Halter kpl.	holder ass'y		1
24	225.903.401.024	Befestigung Tragegurt	harness clamp		1
25	225.903.401.025	Klammer	clamp		1
26	225.903.401.026	Schraube	screw	M5x20	1
27	225.903.401.027	Mutter	nut	M5	2
28	225.903.401.028	Schaft	pipe		1
29	225.903.401.029	Gummiabdeckung	rubber cover		6
30	225.903.401.030	Oil-bearing	oil-bearing	8x14x14	6
31	225.903.401.031	Antriebsachse	drive shaft		1
32	225.903.401.032	Tragegurt kpl.	harness clamp		1
33	225.903.401.033	Kabelbinder	wire clamp band		3
34	225.903.401.034	Schraube	screw	M6x40	4
35	225.903.401.035	untere Kappe	cap, lower		1
36	225.903.401.036	Gummiabdeckung	rubber cover		1
37	225.903.401.037	Mutter	nut	M6	4
38	225.903.401.038	Führung	bracket		1
39	225.903.401.039	Mutter	nut	M6	4
40	225.903.401.040	Obere Kappe	cap, upper		1
41	225.903.401.041	Schraube	screw	M6x25	4
42	225.903.401.042	Griff links	handle		1
43	225.903.401.043	Stopp-Schalter kpl.	stop switch		1
44	225.903.401.044	Schaft	pipe		1
45	225.903.401.045	Gummigriff	rubber handle		1
46	225.903.401.046	Hebel kpl.	lever ass'y		1

# LawnBoss

Ersatzteilliste  
Spare Parts List

Freischneider **340 Pure**  
Brush Cutter **340 Pure**

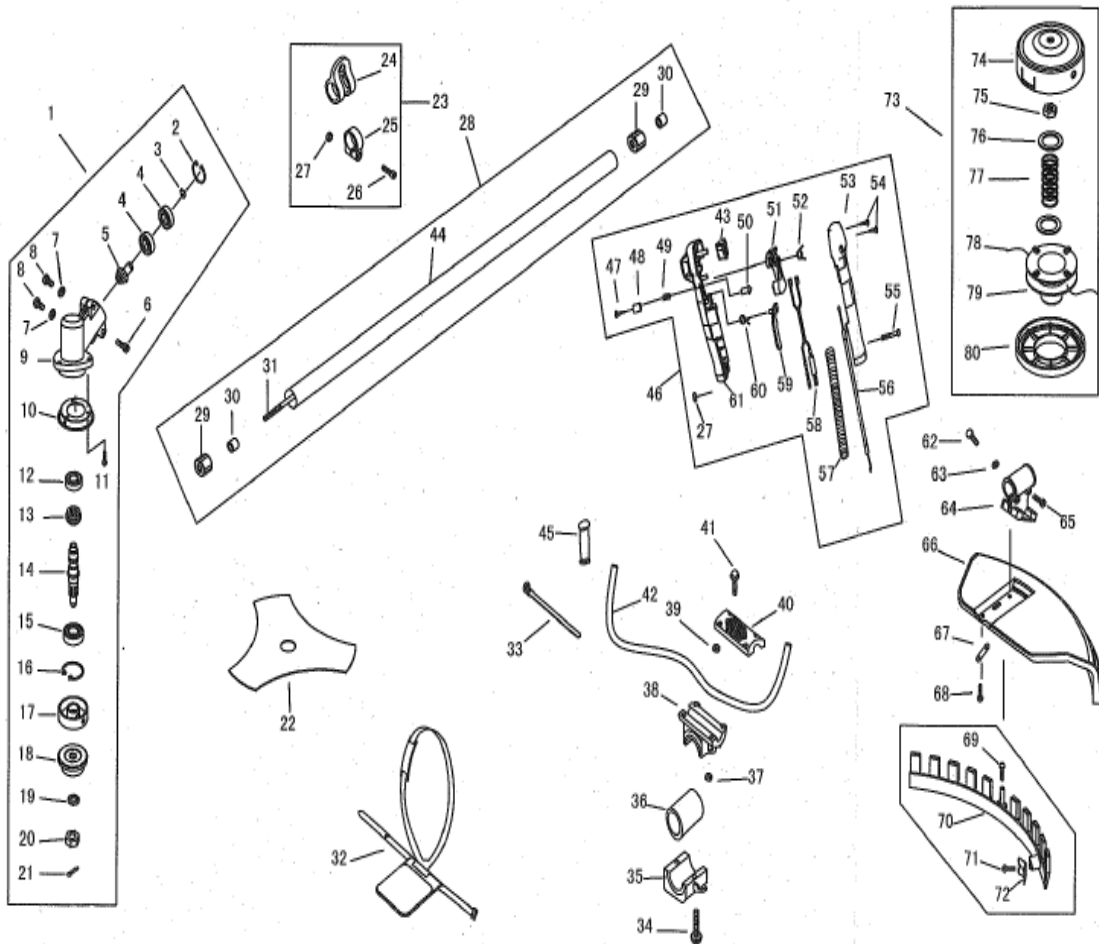
N°	Art.N°	Beschreibung	Description	Type	Qty
47	225.903.401.047	Schraube	screw	ST2,9x13	1
48	225.903.401.048	Knopf	button		1
49	225.903.401.049	Feder	spring		1
50	225.903.401.050	Niete	clock pin		1
51	225.903.401.051	Gashebel	handgrip		1
52	225.903.401.052	Feder	spring		1
53	225.903.401.053	Hebel Motorstop	box, right		1
54	225.903.401.054	Schraube	screw	ST2,9x18	2
55	225.903.401.055	Schraube	screw	M5x30	1
56	225.903.401.056	Bowdenzug	cable comp.		1
57	225.903.401.057	Hülle	tube		1
58	225.903.401.058	Stop line	stop line		1
59	225.903.401.059	Handgriff	handgrip		1
60	225.903.401.060	Feder	spring		1
61	225.903.401.061	Hebel	box, left		1
62	225.903.401.062	Schraube	screw	M6x20	1
63	225.903.401.063	Scheibe	washer	5	1
64	225.903.401.064	Führung	bracket		1
65	225.903.401.065	Schraube	screw	M5x30	2
66	225.903.401.066	Schutz	safety guard		1
67	225.903.401.067	Distanzscheibe	spacer	M5x30	2
68	225.903.401.068	Schraube	screw	M5x16	4
69	225.903.401.069	Schraube	screw	ST4,2x16	1
70	225.903.401.070	Befestigung	blade		1
71	225.903.401.071	Schraube	screw	ST4,2x12	2
72	225.903.401.072	Schutz kpl.	guard Ass'y		1
73	225.903.401.073	Nylon-Fadenkopf	nylon cutter head		1
74	225.903.401.074	Gehäuse	case		1
75	225.903.401.075	Mutter linksgewinde	left nut		1
76	225.903.401.076	Scheibe	washer		2
77	225.903.401.077	Feder	spring		1
78	225.903.401.078	Seil	rope		1
79	225.903.401.079	Spule	cord holder		1
80	225.903.401.080	Abdeckung	cover		1
81	225.903.401.081	Schaft	pipe		1

# LawnBoss

Ersatzteilliste  
Spare Parts List

Freischneider **340 Pure**  
Brush Cutter **340 Pure**

N°	Art.N°	Beschreibung	Description	Type	Qty
----	--------	--------------	-------------	------	-----



# LawnBoss

Ersatzteilliste  
Spare Parts List

Freischneider **340 Pure**  
Brush Cutter **340 Pure**

N°	Art.N°	Beschreibung	Description	Type	Qty
1	225.903.402.001	Bolzen	bolt assy	M5x16	1
2	225.903.402.002	Unterbringung	housing		1
3	225.903.402.003	Raumwohnung	space housing		1
4	225.903.402.004	Zündkerze	spark plug	RCJ6Y	1
5	225.903.402.005	Gasket	baffle of cylinder		1
6	225.903.402.006	Bolzen	bolt	M5x20	4
7	225.903.402.007	Zylinder	cylinder		1
8	225.903.402.008	Gasket	gasket cylinder		1
9	225.903.402.009	Kolbenring	ring, piston		2
10	225.903.402.010	Kolben	piston		1
11	225.903.402.011	Kolben-Bolzen	pin, piston	9x31	1
12	225.903.402.012	Ring	ring,snap		2
13	225.903.402.013	Lager	needle bearing		1
14	225.903.402.014	Bolzen	bolt assy	M4x12	1
15	225.903.402.015	Kurbelwelle	crank shaft assy		1
16	225.903.402.016	Kugellager	bearing	6001/P53	2
17	225.903.402.017	Kurbelgehäuse	gasket,crank case		1
18	225.903.402.018	Stift	pin		2
19	225.903.402.019	Kurbelgehäuse	rear, crank case		1
20	225.903.402.020	Öl-Dichtung	oil-seal		1
21	225.903.402.021	Starter pulley kpl.	Starter pulley kpl.		1
22	225.903.402.022	Starter kpl.	starter complete		1
23	225.903.402.023	Bolzen	bolt	M4x16	4
24	225.903.402.024	Woodruff key	woodruff key		1
25	225.903.402.025	Kurbelgehäuse	front crank case		1
26	225.903.402.026	retaining ring	retaining ring	28	1
27	225.903.402.027	Bolzen	bolt	M5x25	10
28	225.903.402.028	Öl-Dichtung	oil-seal	12x28x7	1
29	225.903.402.029	Mutter	nut	M8x1,25	1
30	225.903.402.030	Schwungrad	rotor		1
31	225.903.402.031	Scheibe	washer B		2
32	225.903.402.032	Kupplungsbacken	clutch assy		1
33	225.903.402.033	Scheibe	wave washer		2
34	225.903.402.034	Schraubbolzen	clutch bolt		2
35	225.903.402.035	Kupplungs-Glocke kpl.	clutch drum assy		1
36	225.903.402.036	retaining ring	retaining ring	15	1
37	225.903.402.037	retaining ring	retaining ring	35	1
38	225.903.402.038	Kugellager	bearing	6206/P5	1
39	225.903.402.039	Kupplung	clutch case		1
40	225.903.402.040	Bolzen	bolt	M5x12	2
41	225.903.402.041	Gummiabdeckung	rubber anti-vibration		1
42	225.903.402.042	Gummiabdeckung	rubber anti-vibration		1
43	225.903.402.043	Bolzen	bolt		1
44	225.903.402.044	top holder	top holder		1
45	225.903.402.045	below holder	below holder		1
46	225.903.402.046	Dichtung	gasket insulator		1

# LawnBoss

Ersatzteilliste  
Spare Parts List

Freischneider **340 Pure**  
Brush Cutter **340 Pure**

N°	Art.N°	Beschreibung	Description	Type	Qty
47	225.903.402.047	Zwischstück Vergaser	insulator		1
48	225.903.402.048	Bolzen	bolt assy	M5x20	5
49	225.903.402.049	Dichtung	gasket carburator		1
50	225.903.402.050	Vergaser	carburetor		1
51	225.903.402.051	Dichtung	gasket carburator		1
52	225.903.402.052	clip, pipe	clip, pipe		1
53	225.903.402.053	schaft	pipe		1
54	225.903.402.054	clip, pipe	clip, pipe		1
55	225.903.402.055	schaft	pipe		1
56	225.903.402.056	Knopf	button		1
57	225.903.402.057	Anschluss Luftfilter	base cleaner		1
58	225.903.402.058	primer pump assy	primer pump assy		1
59	225.903.402.059	Luftfilter-Einsatz	air filter element		1
60	225.903.402.060	Bolzen	bolt assy	M5x60	2
61	225.903.402.061	Abdeckung Luftfilter	cover cleaner		1
62	225.903.402.062	Luftfilter-Schraube	knob cover		1
63	225.903.402.063	schaft	pipe		1
64	225.903.402.064	clip, pipe	clip, pipe		1
65	225.903.402.065	Benzinfilter kpl.	fuel filter complete		1
66	225.903.402.066	Tankdeckel	cap fuel tank		1
67	225.903.402.067	valve fuel cap	valve fuel cap		1
68	225.903.402.068	Gummi-Einsatz	holder valve		1
69	225.903.402.069	Gummi-Einsatz	holder stopper		1
70	225.903.402.070	Dichtung	gasket fuel cap		1
71	225.903.402.071	Sicherungskabel	stopper		1
72	225.903.402.072	tank	fuel tank		1
73	225.903.402.073	Halter	bracket fuel tank		1
74	225.903.402.074	Scheibe	washer		1
75	225.903.402.075	Stift	pin	4	2
76	225.903.402.076	Dichtung	gasket muffler		1
77	225.903.402.077	Auspuff	muffler assy		1
78	225.903.402.078	Abdeckung Auspuff	heat shield		1
79	225.903.402.079	Bolzen	bolt assy	M5x55	2
80	225.903.402.080	Scheibe	washer	4	2
81	225.903.402.081	Distanzscheibe	space ig coil		2
82	225.903.402.082	wire lead	wire lead		1
83	225.903.402.083	Zündung kpl.	ignition coil complete		1
84	225.903.402.084	Bolzen	bolt assy	M4x20	2
85	225.903.402.085	Scheibe	washer	5	12
86	225.903.402.086	Scheibe	washer	5	12

# LawnBoss

Ersatzteilliste  
Spare Parts List

Freischneider **340 Pure**  
Brush Cutter **340 Pure**

N°	Art.N°	Beschreibung	Description	Type	Qty
----	--------	--------------	-------------	------	-----

